

# Kentucky's Fast Facts

## Students Identified with Intellectual Disability, ages 5 (in Kindergarten) to 21, served under the Individuals with Disabilities Education Act (IDEA) Part B

From the Kentucky Department of Education (KDE), Office of Special Education and Early Learning (OSEEL) April, 2024

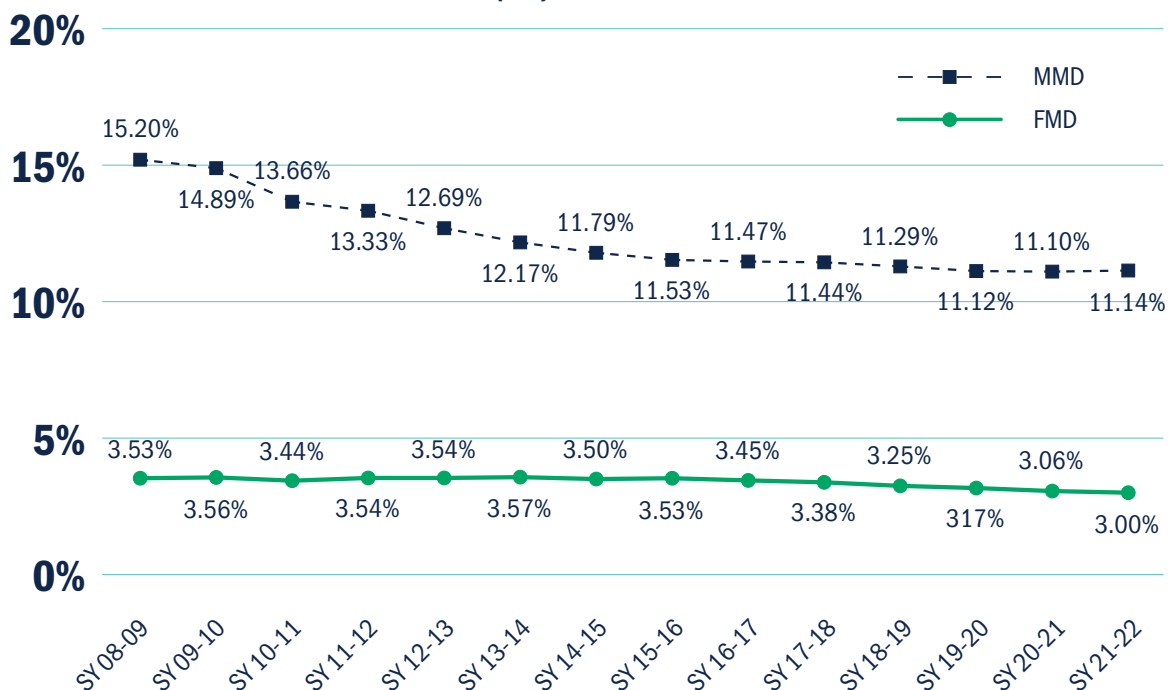
Related Resource from the Office of Special Education Programs (OSEP): [OSEP Fast Facts: Children Identified with Intellectual Disability](#)

### WHAT IS AN INTELLECTUAL DISABILITY?

- In Kentucky, an “intellectual disability” is defined as a “mental disability” which includes both a mild mental disability (MMD) and a functional mental disability (FMD). [707 KAR 1:002, Section 1 (37)]
- Both MMD and FMD typically manifest during the developmental period and require that a severe deficit exist in overall academic performance including acquisition, retention and application of knowledge;
  - Cognitive functioning must be at least two (2), but no more than three (3), standard deviations below the mean for MMD and three (3) standard deviations below the mean for FMD; and
  - Adaptive behavior deficits must be at least two (2) standard deviations below the mean for MMD and three (3), or more, standard deviations below the mean for FMD.

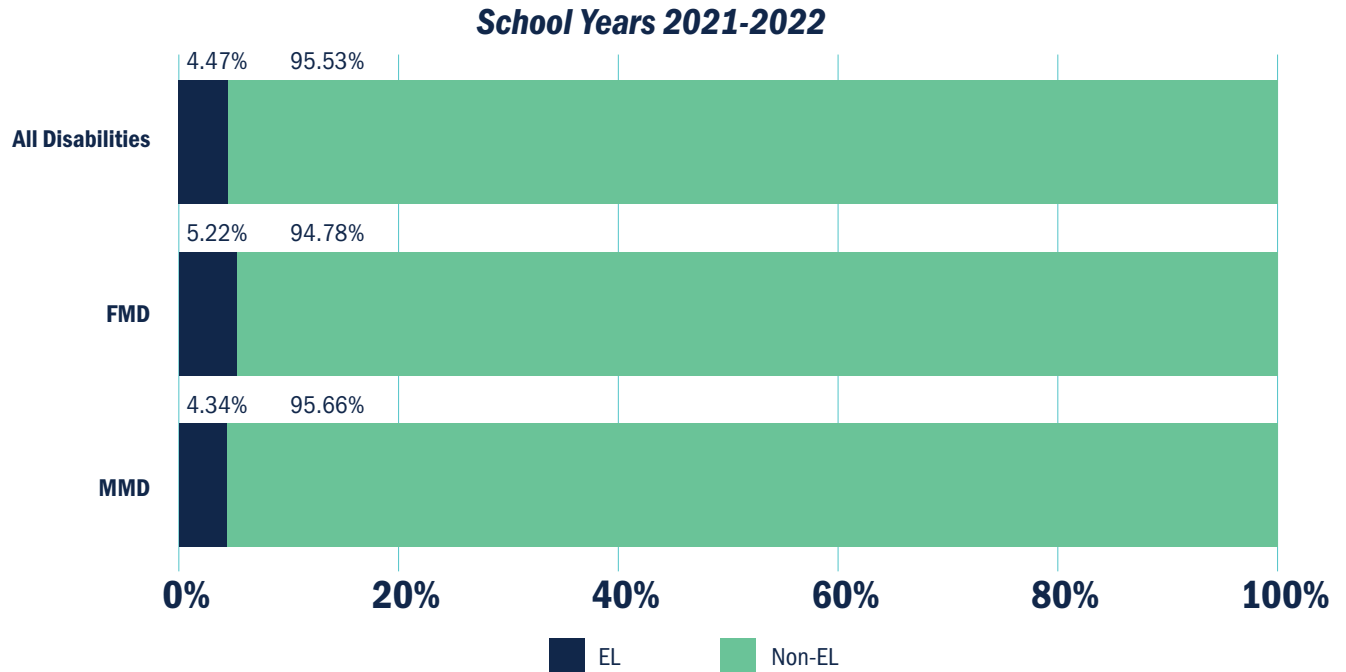
### Percentage of Kentucky Students Identified with an Intellectual Disability (including MMD & FMD), Ages 5 (in Kindergarten) to 21, Served Under IDEA, Part B

Between School Years (SY) 2008-09 and 2021-2022



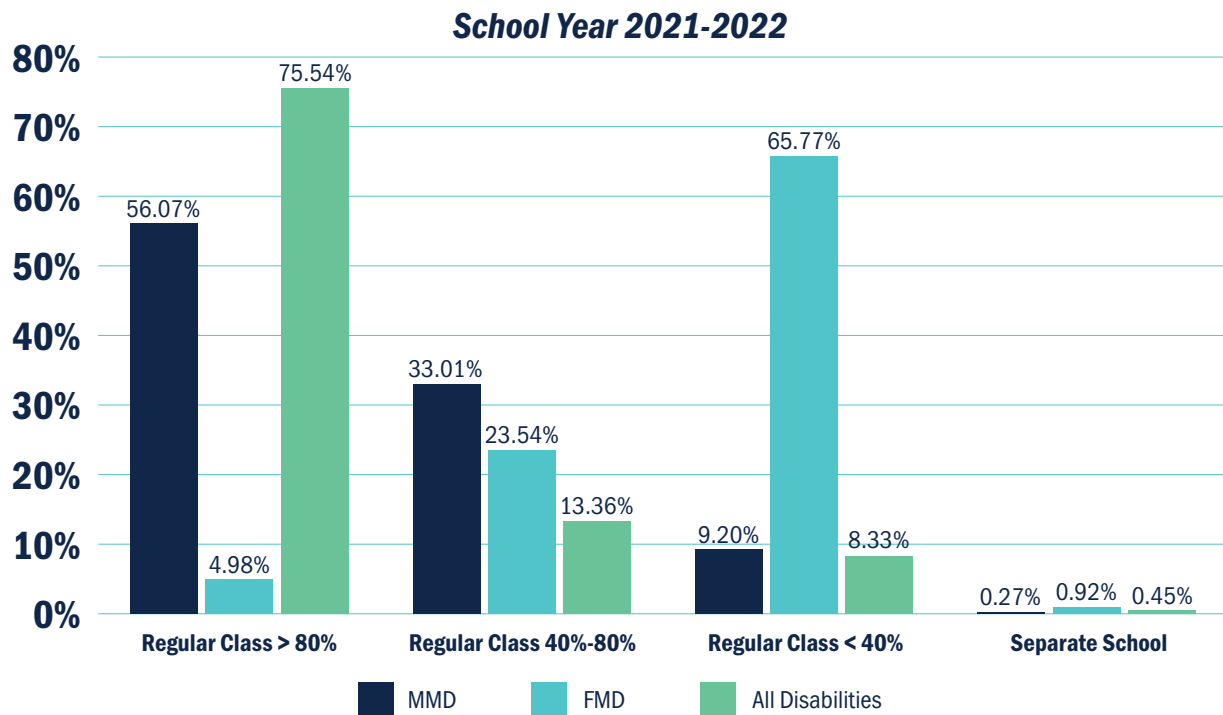
The percentage of students with disabilities identified with an MMD decreased from 15.2% in SY 2008-09 to 11.14% in SY 2021-22. Students with an FMD have remained at 3% to 3.57% since SY 2008-09.

## Percentage of Kentucky Students with Disabilities, Ages 5 (in Kindergarten) to 21, by English Language Proficiency, Served Under IDEA, Part B



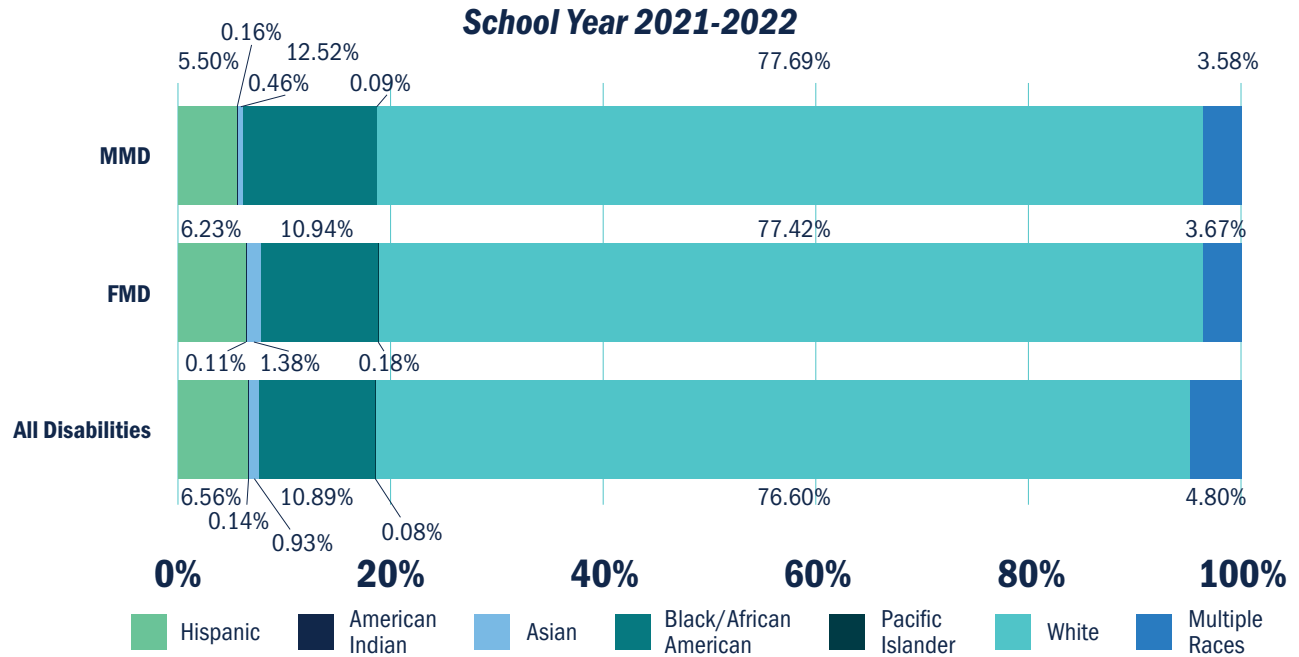
Students with an FMD are more likely to be English Learners (EL) compared to students with an MMD and all students with disabilities.

## Percentage of Kentucky Students with Disabilities, Ages 5 (in Kindergarten) to 21, by Educational Environment, Served Under IDEA, Part B



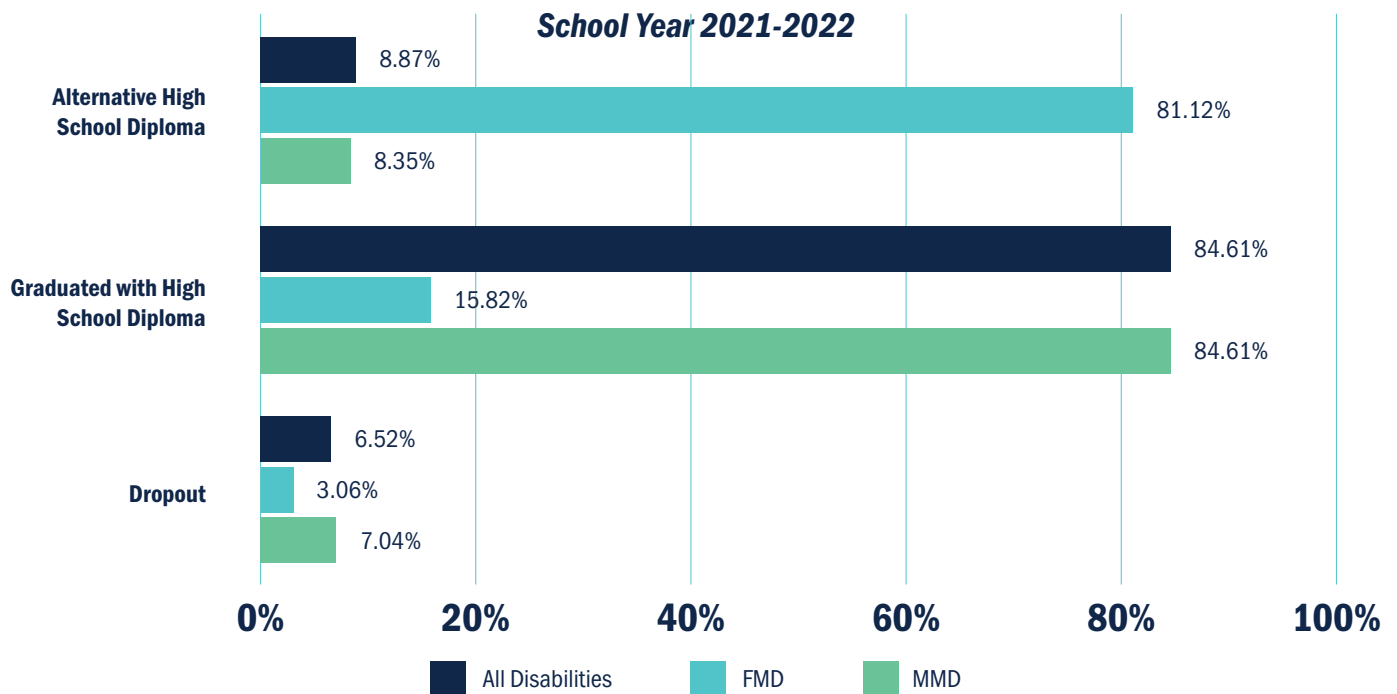
In SY 2021-2022, more students identified with an MMD were served in a regular class for 80% of the day or greater than students identified with an FMD. However, more students identified with an FMD were served in the regular class less than 40% of the day when compared to all students with disabilities and students identified with an MMD.

## Percentage of Kentucky Students with Disabilities, Ages 5 (in Kindergarten) to 21, by Race and Ethnicity, Served Under IDEA, Part B



In SY 2021-22, when compared to all students with disabilities, students who are Black/African American are more likely to be identified with an MMD. However, students who are Hispanic are less likely to be identified with an MMD or FMD.

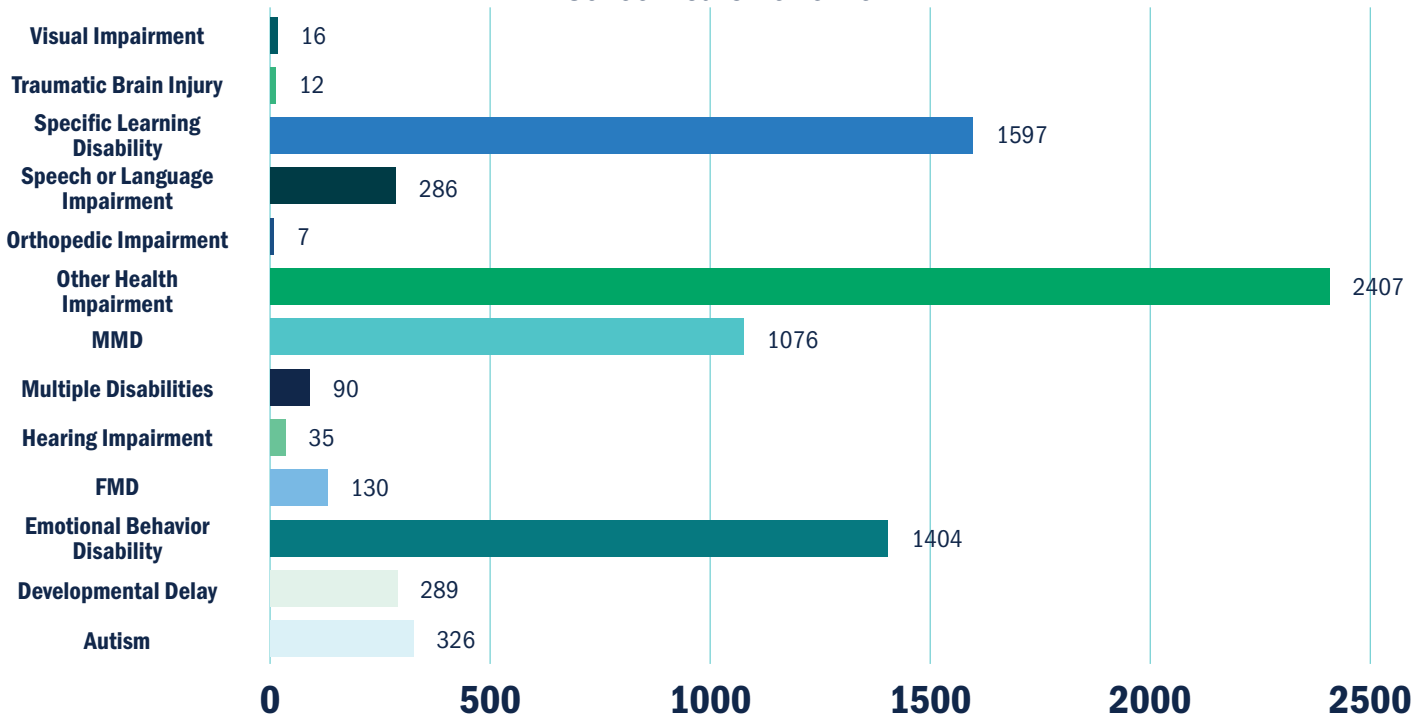
## Percentage of Kentucky Students with Disabilities Exiting School, Ages 14 to 21, by Race and Ethnicity, Served Under IDEA, Part B



In SY 2020-21, students identified with an FMD, ages 14 to 21, exiting school were more likely to receive an Alternative High School Diploma and less likely to graduate with a regular high school diploma than all students with disabilities. Students identified with an MMD, ages 14 to 21, exiting school were more likely to graduate with a High School Diploma when compared to students with an FMD.

## Total Number of Disciplinary Removals for Students with Disabilities, Ages 3 to 21, by Disability Category, Served Under IDEA, Part B in Kentucky

School Years 2020-2021

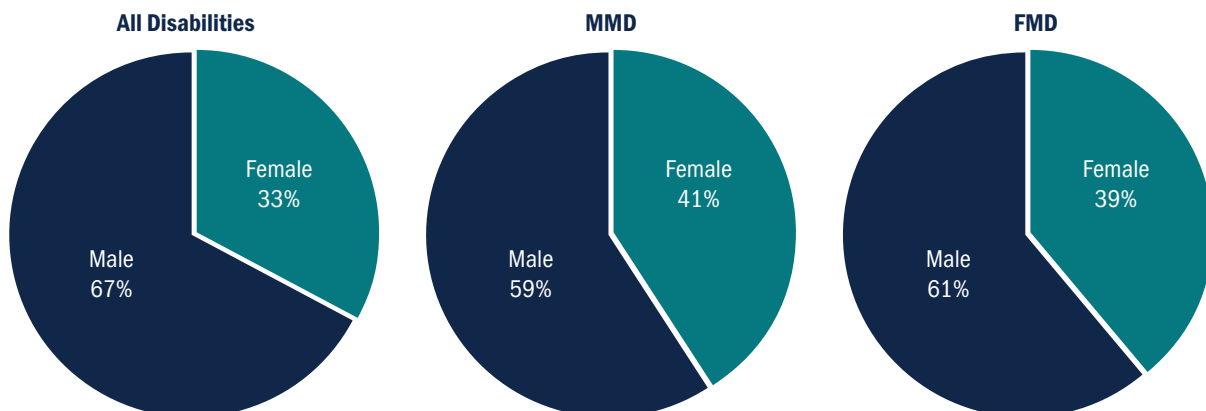


The U.S. Department of Education defines a disciplinary removal as “Any instance in which a child with a disability is removed from his/her educational placement for disciplinary purposes, including in-school suspension, out-of-school suspension, expulsion, removal by school personnel to an interim alternative educational setting for drug or weapon offenses or serious bodily injury, and removal by hearing officer for likely injury to the child or others” [\[FS088 - Children with Disabilities \(IDEA\) Disciplinary Removals File Specification\]](#).

When compared to all other disability categories, students with an MMD have the fourth-highest number of removals from their educational placement. Students with an FMD have the fourth lowest number of removals from their educational placement compared to other disability categories.

## Percentage of Kentucky Students with Disabilities, Ages 5 (in Kindergarten) to 21, by Gender, Served Under IDEA, Part B

School Year 2021-22



In SY 2021-22, similar to all students with disabilities, males were more likely to be identified with an MMD or FMD than females.

# WHERE CAN I ACCESS MORE DATA ON STUDENTS WITH INTELLECTUAL DISABILITIES?

## RESOURCES

- [KY Special Education Data Dashboard \(KDE\)](#) : An interactive dashboard which can be used to determine the number of students with disabilities in Kentucky, as well as individual districts, Special Education Technical Assistance Centers (SERTAC) and Early Childhood Regional Training Centers (RTC) for the last three years.
- [KY Special Education Child Count Dashboard](#): An interactive dashboard that provides an overview of Kentucky's Special Education Child Count Data that is required by the IDEA.
- [Department of Education Open Data Platform](#): Provides each state's IDEA Part B annual data related to infants, toddlers and children with disabilities.