

Goal Monitoring in Infinite Campus

Presented by:

Ashley Cook, Division of IDEA Implementation and Preschool

Jessica Jones, Division of IDEA Monitoring and Results

Topics Covered:

1. Type of Data vs. Method of Measurement
2. Basic Set Up
 - i. Annual Goals
 - ii. Adding an Aim Line
 - iii. Adding interventions
3. Running a Full Report

Type of Data vs. Method of Measurement

Type of Data

Type of Data	What it means:	Can be recorded as:
Duration	How long a behavior lasts (e.g., amount of time on task).	<ol style="list-style-type: none">1. Average minutes2. Average seconds3. Percent
Event Recording	The number of times or at what percent a behavior occurs.	<ol style="list-style-type: none">1. Frequency (i.e., number of times a behavior occurs)2. Percent (i.e., score on probe)3. Rate (i.e., number of times behavior occurs during a specific time frame)
Latency	Measuring how long it takes for a behavior to begin after a specific verbal prompt or event has occurred.	<ol style="list-style-type: none">1. Average minutes2. Average seconds

Choosing Type of Data

Method of Measurement	Type of data:
Curriculum Based Measurement (CBM) – using probes to measure the growth of the student proficiency.	<ul style="list-style-type: none">• Event Recording
Direct Measures – direct observation of performance and repeated recordings of student response (student present).	<ul style="list-style-type: none">• Event Recording• Duration• Latency
Indirect Measures – using scoring criteria to review student performance (student not present)	<ul style="list-style-type: none">• Event Recording
Authentic Assessment – measuring a student’s performance in task and situations that resemble real-life tasks and situations. (must be paired with another measurement)	<ul style="list-style-type: none">• Will depend on the method of measured paired with

Goal Monitoring in IC

Key Features:

- Integrates with IEPs to monitor annual goals and benchmarks
- Stays with student from year-to-year and in-state transfers
- Can be used to create graphs with trend lines, aim lines and interventions
 - Filter tool to find data

Setting Up Goals

- Index
- Search
- Search Campus Tools
- System Administrator
- *Tableau Visualizations
- Employee Self Service
- KCPS Website
- ▼ Student Information
 - General
 - ▶ Counseling
 - Academic Planning
 - ▶ Program Participation
 - ▶ Health
 - Medicaid
 - ▶ ILPA
 - ▶ PLP
 - ▶ Response to Intervention
 - ▼ Special Ed
 - General**
 - Caseload
 - ▶ Blank Forms
 - Student Locator
 - ▶ Reports
 - Census
 - Behavior
 - Health
 - Attendance

Student, High S

Grade: 09 DOB: 05/18/2006 Gender: M

Summary Team Members Documents Contact Log **Goal Monitoring** Service Log

- Person Summary Report
- Print Mailing Label
- Print Envelope



Person Information

PersonID
44222

Name
Student, High School

Gender
M

Nickname

No Image Available

Race Ethnicity

State Race/Ethnicity:	1:Hispanic/Latino
Federal Designation:	1:Hispanic/Latino
Race(s):	White
Hispanic/Latino:	Y:Yes
Race/Ethnicity Determination:	01:Parent Identified

Birth Date (Age: 14)
05/18/2006

Student Number **State ID**

Person GUID
AB88623D-5B3F-4263-8CE8-12164E967C1D

Comments

- Modified by: Administrator, System 01/06/2021 07:52

New Summary Tab

1. Select 'Goal Monitoring' from Special Ed navigation bar.

- Index
- Search
- Search Campus Tools
- System Administrator
- *Tableau Visualizations
- Employee Self Service
- KCPS Website
- Student Information
 - General
 - Counseling
 - Academic Planning
 - Program Participation
 - Health
 - Medicaid
 - ILPA
 - PLP
 - Response to Intervention
 - Special Ed
- General
 - Caseload
 - Blank Forms
 - Student Locator
 - Reports
 - Census
 - Behavior
 - Health
 - Attendance

Student, High S
Grade: 09 DOB: 05/18/2006 Gender: M

Summary Team Members Documents Contact Log **Goal Monitoring** Service Log

Goal Monitoring

Goal Monitoring List

Goal	Objective	Entries
No records to display.		

2. Select 'New' on Goal Monitoring home page.



New Report

Student, High S

Grade: 09 DOB: 05/18/2006 Gender: M

- Summary
- Team Members
- Documents
- Contact Log
- Goal Monitoring**
- Service Log

Goal Monitoring

Goal Monitoring Detail

Plan *

KY IEP (11/02/2020 - 11/01/2021)

Goals *

- 1. When given 15 comprehension questions from an 8th grade level reading passage, High will answer the questions with 70% accuracy for 4 out of 5 consecutive probes as measured by twice monthly assessments.
- 2. When given 10 math problems on the 7th grade level, High will correctly solve the problems with 80% accuracy as measured by twice monthly assessments.
- 3. When given a writing prompt on current content, High will develop a 5 sentence paragraph response to score at least a 2 out of 4 on a holistic rubric on 4 out of 5 consecutive occasions as measured by twice monthly writing assignments.
- 4. When given a classroom task or assignment, High will begin working on task/assignment within 2 minutes of receiving instructions on 4 out of 5 consecutive occasions as measured by teacher observation.

Duration

Event Recording

Latency

Data Recorded as *

Type of Data is required

Save

Cancel

3. Choose the current IEP, select the goal, choose the Type of Data and how the data will be recorded and Save.



Logging Data

1. From the Goal Monitoring home page, select 'Log' for the goal for which you wish to enter data.

Student, High S

Grade: 09 DOB: 05/18/2006 Gender: M

Summary Team Members Documents Contact Log **Goal Monitoring** Service Log

Goal Monitoring

Goal Monitoring List

Goal	Objective	Entries	
▼ KY IEP (11/02/2020 - 11/01/2021)			
+ 1. When given 15 comprehension questions from an 8th grade level reading passage, High will answer the questions with 70% accuracy for 4 out of 5 consecutive probes as measured by twice monthly assessments.		0	Edit Log
+ 2. When given 10 math problems on the 7th grade level, High will correctly solve the problems with 80% accuracy as measured by twice monthly assessments.		0	Edit
+ 3. When given a writing prompt on current content, High will develop a 5 sentence paragraph response to score at least a 2 out of 4 on a holistic rubric on 4 out of 5 consecutive occasions as measured by twice monthly writing assignments.		0	Edit
+ 4. When given a classroom task or assignment, High will begin working on task/assignment within 2 minutes of receiving instructions on 4 out of 5 consecutive occasions as measured by teacher observation.		0	Edit Log

New Report

Student, High S

Grade: 09 DOB: 05/18/2006 Gender: M

- Summary
- Team Members
- Documents
- Contact Log
- Goal Monitoring**
- Service Log

Aim

Not enabled

[Edit](#)

2. On the Goal/Objective subpage, scroll down to Data Entries and select 'New'

Data Entries

Date	Data	Progress Made	Comments
<input type="text"/>	<input type="text"/>	<input type="text"/>	<input type="text"/>
No records available.			

[New](#) 

Changes in Intervention

Date	Comments
<input type="text"/>	<input type="text"/>
No records available.	

[Preview](#) [Cancel](#)

Student, High S

Grade: 09 | DOB: 05/18/2006 | Gender: M

- Summary
- Team Members
- Documents
- Contact Log
- Goal Monitoring**
- Service Log

Aim

Not enabled

Edit

Data Entries

Date					
	▼		▼		▼

No records available.

New

Changes in Intervention

Date	Comments
	▼

No records available.

3. On the Data Entry sidebar, select the data and enter the data. You can also choose to include if the progress is adequate and enter comments. Select save when done.

Data Entry

Date *
11/02/2020

Data *
Recorded as Percent
45

Is the progress to date adequate to meet expected mastery of the goal or objective?
No

Comments
7th grade level reading passage. Spent approximately 5 minutes on passage and answering questions.

Previewing Graph

Student, High S

Grade: 09 DOB: 05/18/2006 Gender: M

Summary Team Members Documents Contact Log **Goal Monitoring** Service Log

Not enabled

Edit

Data Entries

Date	Data	Progress Made	Comments
<input type="text"/>	<input type="text"/>	<input type="text"/>	<input type="text"/>
11/02/2020	45	No	7th grade level reading passage. Spent approximately 5 minutes on passage and answering questions.
11/16/2020	45	No	7th grade level reading passage.
12/07/2020	50	No	7th grade level.
12/14/2020	45	No	7th grade level.
01/04/2021	50	No	7th grade level.
01/18/2021	60	Yes	7th grade level.

New

Select 'Preview' from the Goal/Objective subpage.

Preview



Goal Monitoring Report

Student Name: High S Student

Student Number:

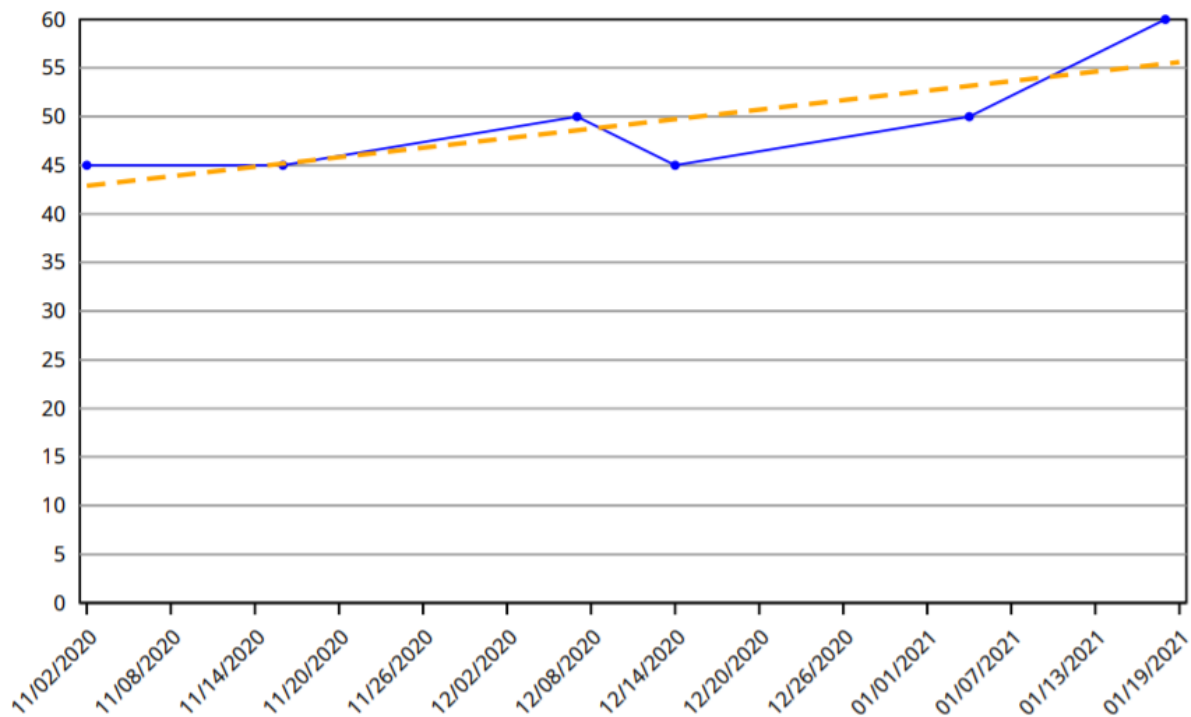
Date: 01/21/2021

Goal Monitoring Report



Goal: 1. When given 15 comprehension questions from an 8th grade level reading passage, High will answer the questions with 70% accuracy for 4 out of 5 consecutive probes as measured by twice monthly assessments.

Type of Data: Event Recording Data Recorded as: Percent



Details

Date	Data	Comments
11/02/2020	45	7th grade level reading passage. Spent approximately 5 minutes on passage and answering questions.
11/16/2020	45	7th grade level reading passage.
12/07/2020	50	7th grade level

Open in Acrobat



Adding an Aim Line

Student, High S

Grade: 09 DOB: 05/18/2006 Gender: M

Summary Team Members Documents Contact Log **Goal Monitoring** Service Log

Goal Monitoring

Goal/Objective

Plan	Type of Data	Data Recorded as
KY IEP (11/02/2020 - 11/01/2021)	Event Recording	Percent

Goal

1. When given 15 comprehension questions from an 8th grade level reading passage, High will answer the questions with 70% accuracy for 4 out of 5 consecutive probes as measured by twice monthly assessments.

Aim

Not enabled

Edit

1. From the Goal/Objective subpage, select 'Edit' under the Aim section.

Data Entries

Date	Data	Progress Made	Comments
11/02/2020	45	No	7th grade level reading passage. Spent approximately 5 minutes on passage and answering questions.

Preview

Cancel

Student, High S

Grade: 09 DOB: 05/18/2006 Gender: M

- Summary
- Team Members
- Documents
- Contact Log
- Goal Monitoring**
- Se...

1. Select 'Enable Aim'
2. Enter the baseline date and the baseline data.
3. Enter the aim date and the aim of the goal.
4. Select 'Save'.

Plan
KY IEP (11/02/2020 - 11/01/2021)

Goal
1. When given 15 comprehension questions from an 8th grade level reading passage, Hig measured by twice monthly assessments.

Aim

Enable Aim

Baseline Date *
11/02/2020

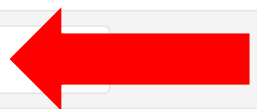
Baseline *
Recorded as Percent
45

Aim Date *
11/01/2021

Aim *
Recorded as Percent
70

Save

Preview Cancel



Previewing the graph with an aim line

Student, High S

Grade: 09 DOB: 05/18/2006 Gender: M

Summary Team Members Documents Contact Log **Goal Monitoring** Service Log

Not enabled

Edit

Data Entries

Date	Data	Progress Made	Comments
<input type="text"/>	<input type="text"/>	<input type="text"/>	<input type="text"/>
11/02/2020	45	No	7th grade level reading passage. Spent approximately 5 minutes on passage and answering questions.
11/16/2020	45	No	7th grade level reading passage.
12/07/2020	50	No	7th grade level.
12/14/2020	45	No	7th grade level
01/04/2021	50	No	7th grade level.
01/18/2021	60	Yes	7th grade level.

New

Select 'Preview' from the Goal/Objective subpage.

Preview



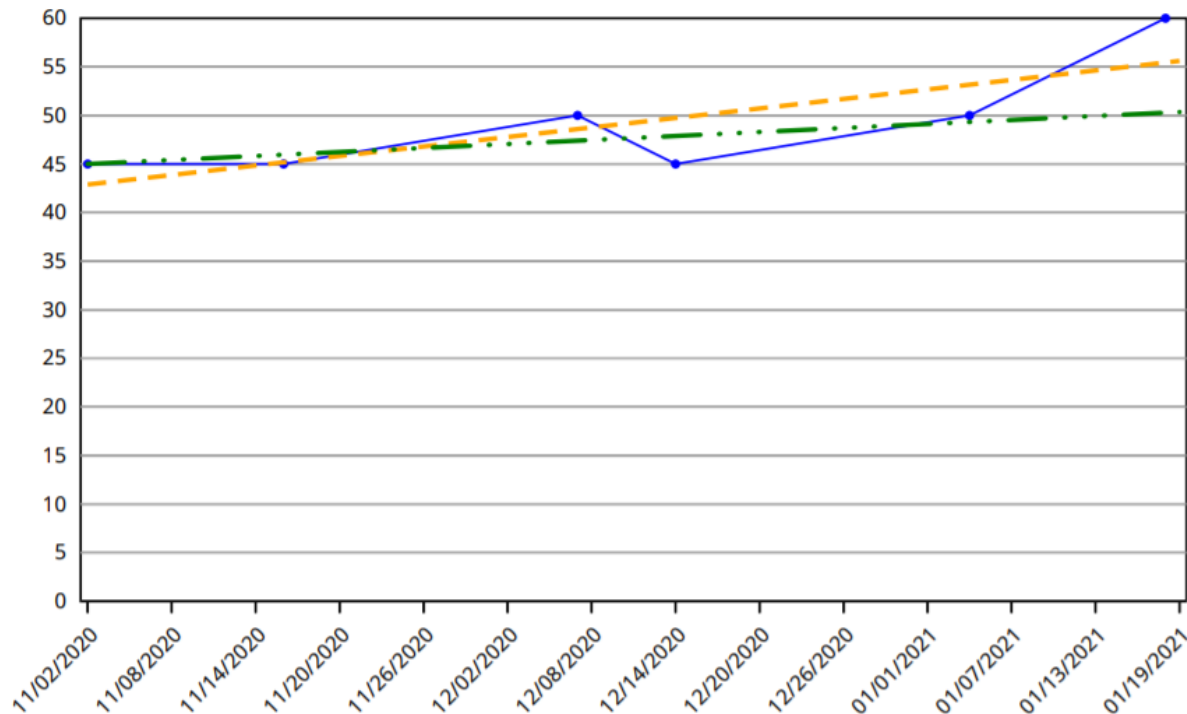
Student Name: High S Student
Student Number:
Date: 01/21/2021

Goal Monitoring Report



Goal: 1. When given 15 comprehension questions from an 8th grade level reading passage, High will answer the questions with 70% accuracy for 4 out of 5 consecutive probes as measured by twice monthly assessments.

Type of Data: Event Recording **Data Recorded as:** Percent



Details

Date	Data	Comments
11/02/2020	45	7th grade level reading passage. Spent approximately 5 minutes on passage and answering questions.
11/16/2020	45	7th grade level reading passage.
12/07/2020	50	7th grade level.
12/14/2020	45	7th grade level
01/04/2021	50	7th grade level.

Entering a Change in Intervention

Student, High S

Grade: 09 DOB: 05/18/2006 Gender: M

Summary Team Members Documents Contact Log **Goal Monitoring** Service Log

11/02/2020	45
11/16/2020	45
12/07/2020	50
12/14/2020	45
01/04/2021	50
01/18/2021	60

New

Changes in Intervention

Date	Comments
<input type="text"/>	<input type="text"/>

No records available.

New

Preview

Cancel

Intervention

Date *

01/04/2021

Comments *

How will specially designed instruction be modified based on the student's lack progress towards mastery?

High will begin verbally summarizing the reading passage prior to answering the comprehension questions.]

Save

Close

1. On the Goal/Objective subpage, select 'New' under Changes in Intervention.
2. Enter the date the change the made.
3. Describe how the specially designed instruction will be modified based on the student's lack of progress towards mastery.
4. Save changes.

Previewing the graph with intervention changes

Summary Team Members Documents Contact Log **Goal Monitoring** Service Log

Not enabled

Edit

Data Entries

Date	Data	Progress Made	Comments
<input type="text"/>	<input type="text"/>	<input type="text"/>	<input type="text"/>
11/02/2020	45	No	7th grade level reading passage. Spent approximately 5 minutes on passage and answering questions.
11/16/2020	45	No	7th grade level reading passage.
12/07/2020	50	No	7th grade level.
12/14/2020	45	No	7th grade level
01/04/2021	50	No	7th grade level.
01/18/2021	60	Yes	7th grade level.

New

Select 'Preview' from the Goal/Objective subpage.

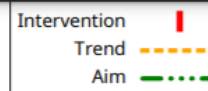
Preview



Student Number:

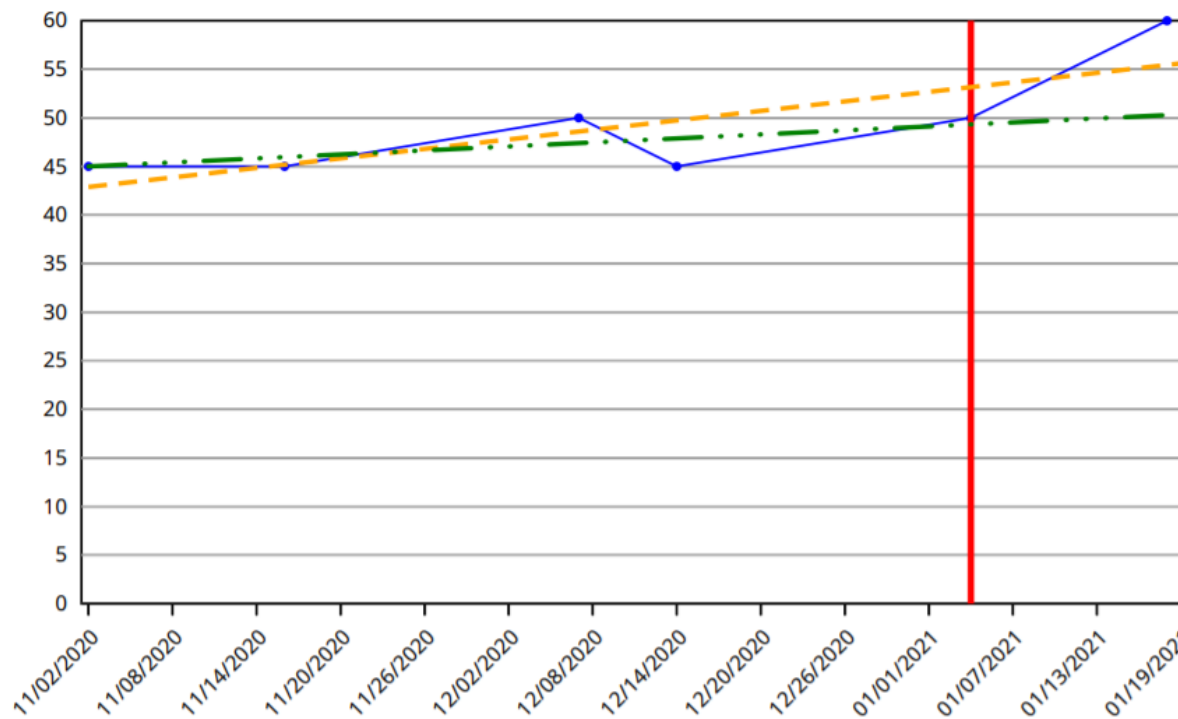
Date: 01/21/2021

Goal Monitoring Report



Goal: 1. When given 15 comprehension questions from an 8th grade level reading passage, High will answer the questions with 70% accuracy for 4 out of 5 consecutive probes as measured by twice monthly assessments.

Type of Data: Event Recording **Data Recorded as:** Percent



Details

Date	Data	Comments
11/02/2020	45	7th grade level reading passage. Spent approximately 5 minutes on passage and answering questions.
11/16/2020	45	7th grade level reading passage.
12/07/2020	50	7th grade level.
12/14/2020	45	7th grade level
01/04/2021	50	7th grade level.
01/04/2021		Intervention: High will begin verbally summarizing the reading passage prior to answering the comprehension questions.

Running a Full Report

- Index
- Search
- Search Campus Tools
- System Administrator
- *Tableau Visualizations
- Employee Self Service
- KCPS Website
- Student Information
 - General
 - Counseling
 - Academic Planning
 - Program Participation
 - Health
 - Medicaid
 - ILPA
 - PLP
 - Response to Intervention
 - Special Ed
 - General
 - Caseload
 - Blank Forms
 - Student Locator
 - Reports
 - Census
 - Behavior
 - Health
 - Attendance

Student, High S

Grade: 09 DOB: 05/18/2006 Gender: M

- Summary
- Team Members
- Documents
- Contact Log
- Goal Monitoring**
- Service Log

Goal Monitoring

Goal Monitoring List

Goal	Objective	Entries	
▼ KY IEP (11/02/2020 - 11/01/2021)			
+ 1. When given 15 comprehension questions from an 8th grade level reading passage, High will answer the questions with 70% accuracy for 4 out of 5 consecutive probes as measured by twice monthly assessments.		6	Edit Log
+ 2. When given 10 math problems on the 7th grade level, High will correctly solve the problems with 80% accuracy as measured by twice monthly assessments.		6	Edit Log
+ 3. When given a writing prompt on current content, High will develop a 5 sentence paragraph response to score at least a 2 out of 4 on a holistic rubric on 4 out of 5 consecutive occasions as measured by twice monthly writing assignments.		6	Edit Log
+ 4. When given a classroom task or assignment on task/assignment within 2 minutes of receiving of 5 consecutive occasions as measured by teacher observation.		10	Edit Log

Select 'Report' from the Goal Monitoring homepage.

- New
- Report



Index Search <

Search Campus Tools

- System Administrator
- *Tableau Visualizations
- Employee Self Service
- KCPS Website
- Student Information
 - General
 - Counseling
 - Academic Planning
 - Program Participation
 - Health
 - Medicaid
 - ILPA
 - PLP
 - Response to Intervention
 - Special Ed
- General
 - Caseload
 - Blank Forms
 - Student Locator
 - Reports
 - Census
 - Behavior
 - Health
 - Attendance

Student, High S

Grade: 09 DOB: 05/18/2006 Gender: M

Summary Team Members Documents Contact Log **Goal Monitoring** Service Log

Goal Monitoring

Goal Monitoring Report Options

Plan * [Dropdown] **Report Start Date *** [month/day/year] [Calendar] **Report End Date *** [month/day/year] [Calendar]

Goals/Objectives *
No Plan and/or Report Dates selected.

Show Trend Line **Show Aim Line** **Apply Zoom Fit**

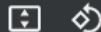
Generate **Cancel**

1. Choose the IEP, the report start and end dates, the Goals/Objectives you want to include and any optional information (trend line, aim line, zoom fit).
2. Select 'Generate'.

Full Report

1 / 4

75%



Student Number:

Date: 01/28/2021

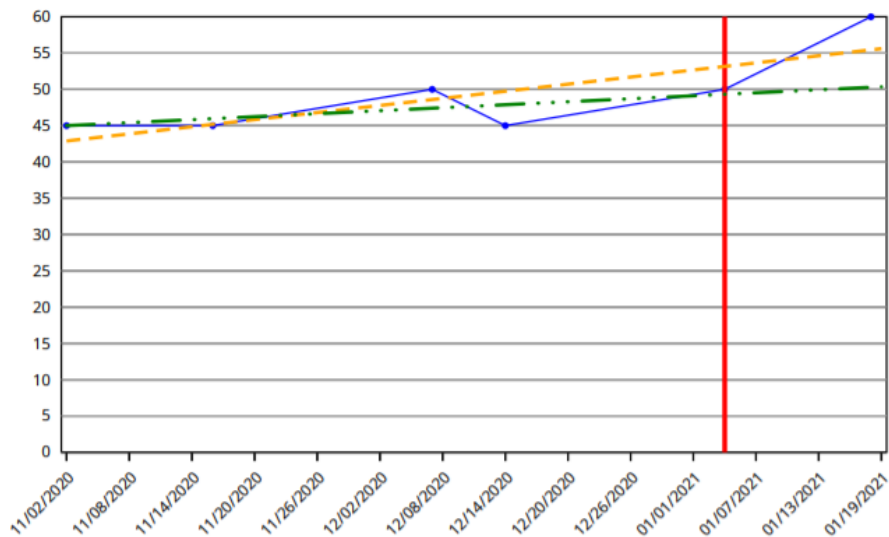
Goal Monitoring Report

11/02/2020 - 01/28/2021



Goal: 1. When given 15 comprehension questions from an 8th grade level reading passage, High will answer the questions with 70% accuracy for 4 out of 5 consecutive probes as measured by twice monthly assessments.

Type of Data: Event Recording Data Recorded as: Percent



Details

Date	Data	Comments
11/02/2020	45	7th grade level reading passage. Spent approximately 5 minutes on passage and answering questions.
11/16/2020	45	7th grade level reading passage.
12/07/2020	50	7th grade level.
12/14/2020	45	7th grade level.
01/04/2021	50	7th grade level.
01/04/2021		Intervention: High will begin verbally summarizing the reading passage prior to answering the comprehension questions.
01/18/2021	60	7th grade level.

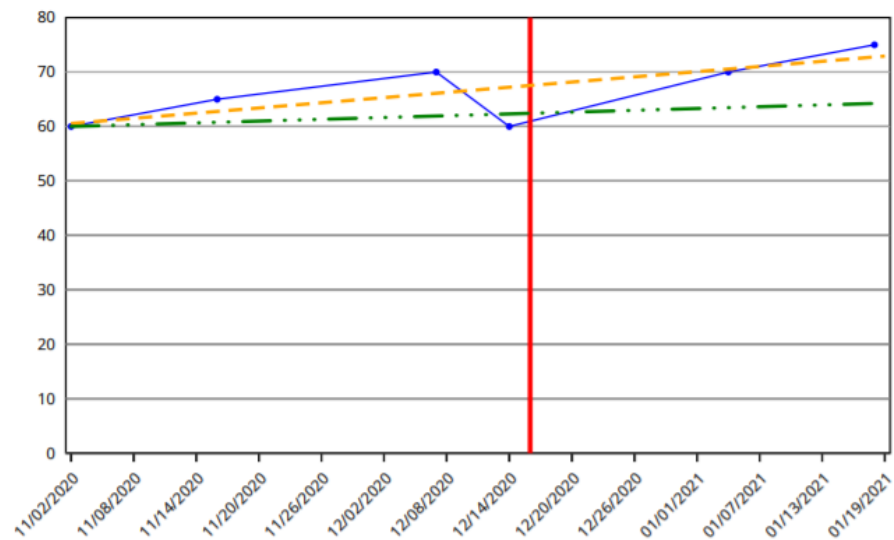
Student Name: High S Student

Student Number:

Date: 01/28/2021

Goal: 2. When given 10 math problems on the 7th grade level, High will correctly solve the problems with 80% accuracy as measured by twice monthly assessments.

Type of Data: Event Recording Data Recorded as: Percent



Details

Date	Data	Comments
11/02/2020	60	
11/16/2020	65	
12/07/2020	70	
12/14/2020	60	
12/16/2020		Intervention: High will join small group during math class for additional guided practice and use of manipulatives.
01/04/2021	70	
01/18/2021	75	

Contact Information

Jessica Jones

jessica.jones@education.ky.gov

(502) 564-4970, ext. 4144

Ashley Cook

ashley.cook@education.ky.gov

(502)564-4970, ext. 4152