



DECEMBER 2025

## Joy to the World

*Three Dog Night*

We made it! December is here and we are about to spend lots of time with family and friends. We all celebrate differently this time of year, but we do celebrate. We enjoy time with those we care about, remember those who have moved on (especially the ones who changed what team they really like this year). I want to take a moment to first say thank you to those who have helped us keep this data clean to date. Then to the ones who have brought joy to the world, I appreciate you. Lastly, as I play with words for not only your enrichment and information, but for your enjoyment as well, I ask that we remember Jeremiah. He was a bullfrog and a good friend of mine...

## IN THIS ISSUE

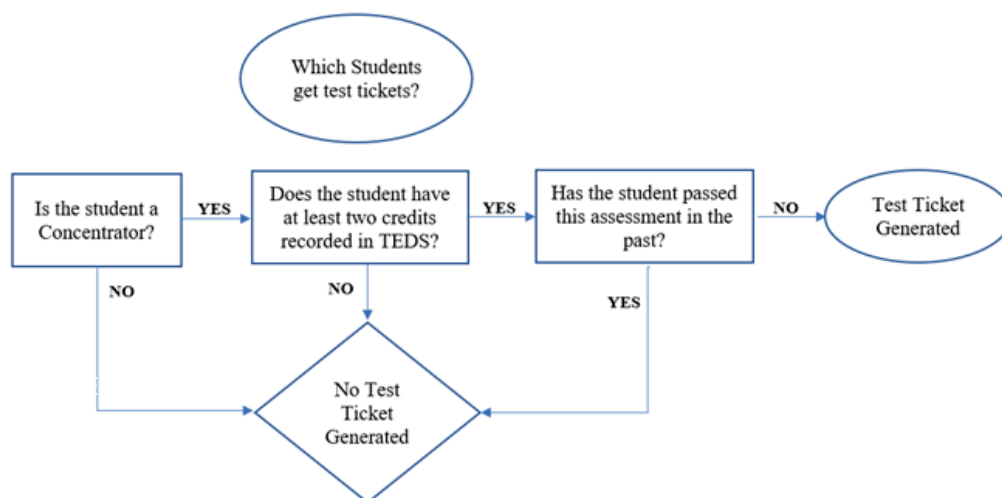
- NEW Data Check Process
- EOP and TRACK Test Tickets
- TEDS Training
- Data Validation
- How Clean Is Your Data?
- Co-op Regulations
- Contact Us
- Upcoming Deadlines

## Pride and Joy

*Marvin Gaye*

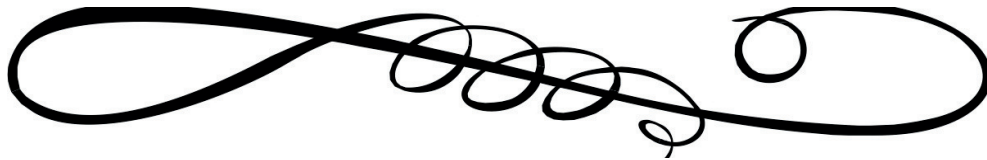
## EOP and TRACK Test Tickets

The window for verifying available EOP and TRACK test tickets is now open. Now is the time to check the reports for EOP Test Ticket and TRACK Test. Check those tickets early. The flow chart shows how tickets are generated. After February 1, 2026, it will be too late to make changes to test tickets based on school or district level errors. For many of us, success is the epitome of our pride and joy. Don't risk that success by not validating test tickets in time. Remember: For a student to generate a test ticket, they must meet ALL requirements for the ticket. After February 1, 2026, if the test ticket is not correctly identified the only remaining joy is that a student can still take an industry certifications in order to meet requirements to become state transition ready. Lastly, if the student is an underclassman, there is always next year.



**I Get Joy**  
*Al Green*  
**TEDS Training**

I have learned that the task of managing this data is better shared. When I get to train others on entering and using the data in TEDS I get joy. This data affects funding, accountability, and our students. To maintain my joy, every month I offer others the chance to join me. Those are the monthly training sessions. Join us by attending one of the upcoming sessions. Dates are posted on the TEDS website the Monday following the currently posted session.



**First Joy**  
*Lisa Stansfield*  
**Data Validation**

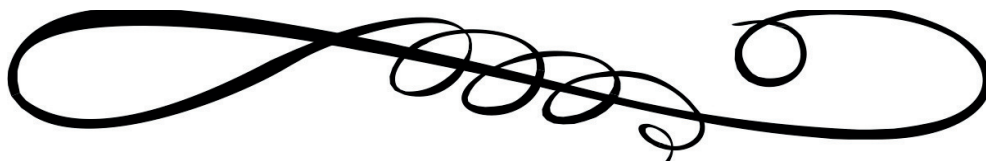
I am excited to say that my first joy is knowing that all schools met the Attend Hours T1 deadline! While we are enjoying those laurels, we can't rest on them. Your next task is between now and February 1 to work with your school or district level Infinite Campus coordinator to see when and if transcripts have been updated. If updates have been made you need to verify the following:

- Have credits been updated on the transcript for each student's pathway valid courses?
- Do the number of credits from pathway valid courses require the student status to be changed from Exploring to Concentrator? (i.e., the student now has at least 2 credits on their transcript for pathway valid courses)?

If the answer to either is "yes", please make the necessary changes on the TEDS tab in Infinite Campus **and complete a new import** into TEDS BEFORE THE DEADLINE OF FEBRUARY 1, 2026.

Remember, a student is not eligible for an EOP or TRACK assessment if their records are not **properly reflected in TEDS** (not just on the TEDS tab in Infinite Campus).

If you have any questions, please contact [kdedataseservices@education.ky.gov](mailto:kdedataseservices@education.ky.gov).



**Jump For Joy**  
*Peggy Lee*  
**How Clean Is Your Data**

Have you ever done something perfectly? I mean, absolutely nailed it? Kinda made you want to jump for joy, didn't it? When you realized it was not going to be an everyday thing, did you stop trying? No? So, don't give up on your data. Make it your goal to have it as clean as possible. Some steps to help meet that goal include:

- When you enroll students in pathways,
  - The student should know they are in that pathway (no surprises)
  - The correct credit hours must be posted. Then, credit hours must be updated whenever they change on the official transcript (e.g., end of semester/trimester).
- When a student earns an industry certification for their chosen pathway, it should be properly entered in TEDS as soon as the information is received from the instructor and in the same school year it is earned.
- Once a student meets the definition of concentrator, that should be properly noted in IC and imported into TEDS when it happens.
- NO DATA HOSTAGES. Clean data is happy data.

**My Joy**  
*Depeche Mode*  
**Co-Op Rules**

You can accomplish all you set out to do with a little determination. Your options are totally wide open. However, my joy comes with consistency and accuracy. Accuracy often requires following the process. The process for Co-op is a legislative mandate. The co-op regulation, **705 KAR 4:041** gives very specific ways a student can legally co-op. They include the following:

A student must fit one of these categories:

1. Be enrolled in a course included within the student's chosen career pathway within the same academic year,
2. Be a completer in the career pathway they are co-oping in by the end of their junior year; or
3. Be Enrolled in an approved pre-apprenticeship program.

Don't lose your sense of joy! If your student does not meet one of these criteria, they cannot legally co-op.

**Tons of Joy**  
*Otis Redding*  
**Upcoming Deadlines**



I have a secret: Things like not being late give me a ton of joy. My goal is to help everyone else feel that joy by not being late with data. Do me a favor, if you would: Regularly review your **TEDS Secondary Schools Timeline** on the main **TEDS website**.

<b>December 15</b>	SIGNED Home School Reports Due (ATCs and KCTCS)
<b>December - January</b>	Suggested Time for <b>Student Data Cleanup</b> (ALL Students) Verify enrollment status, pathway credits and student objectives (in preparation for EOP and TRACK)
<b>February 1</b>	Deadline for students to be marked Concentrator for EOP and TRACK Window opens for all pathway additions and modifications for 2026-2027



**You Bring Me Joy**  
*Anita Baker*  
**Contact Us**

Everyone wants to be needed. When you reach out for help from the KDE CTE Data Services Team, you bring me joy. Know that when you contact us, we will serve and we will be of service. Try it. Call us and we'll help you.

**TEDS/Career Readiness/Infinite Campus/Accountability**  
Amy Tracy, Esti Stith, Sarah Johnson, Claude Christian  
[kdedctedataservices@education.ky.gov](mailto:kdedctedataservices@education.ky.gov)

**Perkins**  
Lori Looney  
[lori.looney@education.ky.gov](mailto:lori.looney@education.ky.gov)