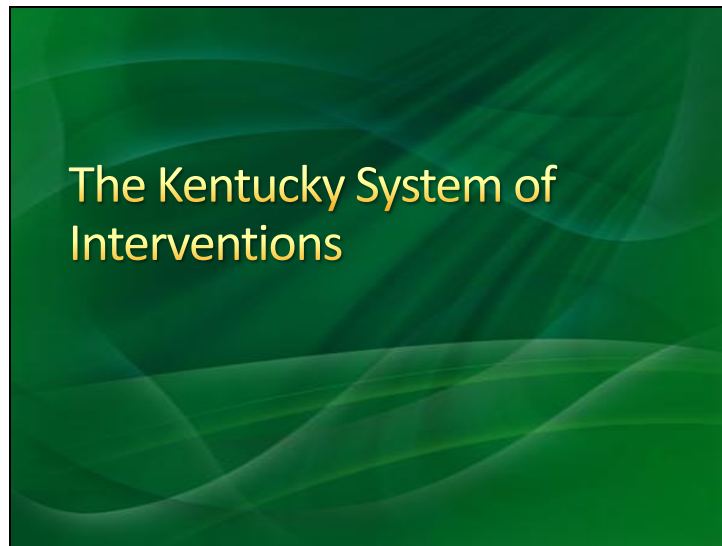


KSI: A Comprehensive Model for High Quality Instruction

Session Goals

- Conceptualize the process of an intervention system
- Construct ideas on how to implement an intervention system of instruction



<http://www.kde.state.ky.us/KDE/Instructional+Resources/Kentucky+System+of+Interventions/>

What is KSI?

- The Kentucky System of Interventions (KSI) is a framework for schools to utilize as they
 - provide systematic, **comprehensive** services
 - address **academic** and **behavioral** needs for all students
- The Guide provides
 - **resources** for planning and decision making as districts and schools develop a system of interventions

•An intervention system is an infrastructure for instruction that frames different levels of student support.

•Intervention plans and decision making rules direct schools on when and how to intervene based upon data that shows a student is functioning outside grade level or age appropriate academic or behavioral expectations.

The Kentucky System of Interventions

KSI

- KDE established KSI to assist schools and districts as they develop a **comprehensive instructional system**
- integrating resources
 - human
 - physical
 - financial
 - materials

RTI

- Response to intervention (RTI) is a **multi-level prevention system** to maximize student achievement and to reduce behavior problems
- integrates
 - assessment
 - intervention

When do we have to implement RTI?

While there are no timelines specifically for the implementation of Rti/KSI, there are requirements in the regulations for exceptional children that one must consider. Pursuant to 707 KAR 1:300 under Child Find there are specific requirements under Section 3. Referral System. Also, in 707 KAR 1:310 there are provisions for a local school district to use Rti to determine a child eligible as having a specific learning disability. This will also be dependent on your local district policies and procedures for exceptional children.

--KDE

KSI and RTI

KSI

- This **comprehensive instructional system** helps schools address
 - **Response to Intervention (RTI)**
 - accelerated learning requirements
 - closing achievement gaps
 - high-quality instruction
 - readiness to learn and student transitions

RTI

- This **multi-level prevention system** helps schools
 - identify students **at risk** for poor learning outcomes
 - provide evidence-based interventions and adjust the intensity and nature of those interventions depending on a student's responsiveness
 - monitor student progress
 - identify students with learning disabilities

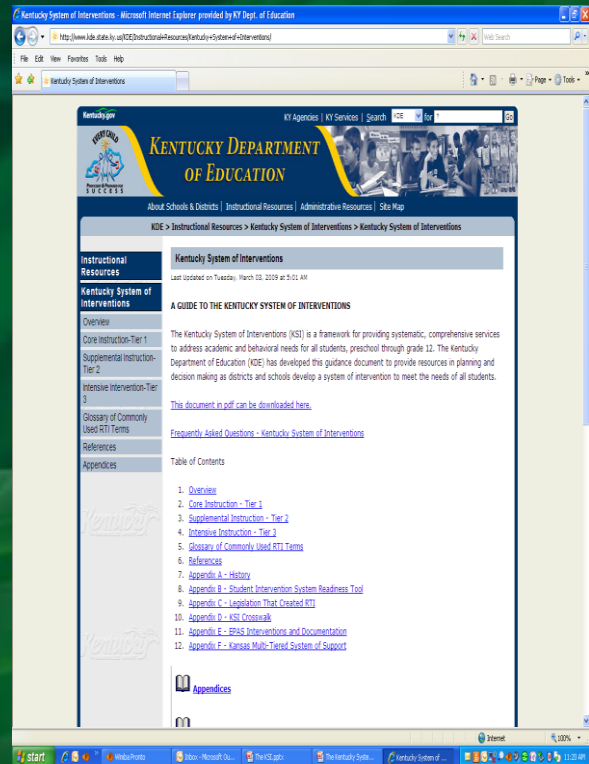
(National Center on Response to Intervention)

Action Planning: Implementing an Intervention System

- Evaluate School Readiness
- Analyze the Core Curriculum and Instruction
- Establish School Decision Making Rules for each Level of Instruction
- Adopt Universal Screening Procedures
- Specify Diagnostic Assessment Process
- Choose a Problem Identification Process
- Design Intervention Planning Tools and Process
 - Construct Data Planning Tools and Procedures
- Establish Progress Monitoring Rules/Process
- Assess the Intervention System for Fidelity of Implementation
- Clarify Staff Roles and Expectations
- Develop Parent Involvement Process
- Develop Professional Development
- Continue to Refine the System

A Guide to the Kentucky System of Interventions

- Overview
- Core Instruction - Tier 1
- Supplemental Instruction - Tier 2
- Intensive Instruction - Tier 3
 - Glossary of Commonly Used RTI Terms
 - References
 - Appendix A - History
 - Appendix B - Student Intervention System Readiness Tool
 - Appendix C - Legislation That Created RTI
 - Appendix D - KSI Crosswalk
 - Appendix E - EPAS Interventions and Documentation
 - Appendix F - Kansas Multi-Tiered System of Support



These are the Table of Contents for the KSI guide. You see that the first four bullets contain the core of the information contained in the document. The last bullets are resources and references.

KSI Guide Key Points

- Decision making rules
 - ensure effective, equitable and fair treatment for all students
- Tiered services
 - provide a system of interventions to maximize student achievement and to reduce behavior problems
- Intervention team roles
 - enable successful collaboration in meeting the needs of students

Tiered services examples

Elementary

- Tier 1: whole group core lesson; small group of no more than 5-6 complete w/ learning centers
- Tier 2: an additional amount of time of small group 5-6; can be done in the general classroom or pull out
- Tier 3: an additional amount of time in small group 1-3; targeted, individualized instruction

Secondary:

- Block scheduling; 90 min. blocks
- 30-40 min. whole group
- 30 min. small group
- 20-30 min. for intervention

Key points, cont.

- Curriculum
 - must be aligned to national, state and local standards and accessible to all students
- Highly effective instruction
 - is research based, aligned to curriculum and accessible to all students
- Universal screening
 - determines the need for diagnostic assessments that inform decisions made by the intervention team

Highly effective instruction

Walkthroughs: objectives on board; access to prior knowledge; teacher models new skills; teacher and student work on the skill together; students work independently on the skill (I do it, we do it, you do it.) Teacher goes back to the objective for the lesson conclusion.

Key points, cont.

- Progress monitoring
 - informs decisions about instruction and individual student learning.
- Family and community engagement
 - is focused on improving student learning.

Progress Monitoring

After the initial screening diagnostic assessment of a student, teachers will want to follow up with progress monitoring of the skills in order to see if the student has mastered the skill.

(Frequency of data collection is different at each tier.)

Implementation

- Implementation of a system of interventions allows schools to provide **academic and behavior supports** and resources to students as soon as a need arises.
- Can help schools reach **NCLB** goals for proficiency.
- Can help schools address the **IDEA 2004** guidelines for eligibility determination for SLD.
- Can help schools design intervention strategies for **EPAS**.

- At-risk students are identified from universal screen and given diagnostic assessments to ascertain specific skill strengths and deficits.

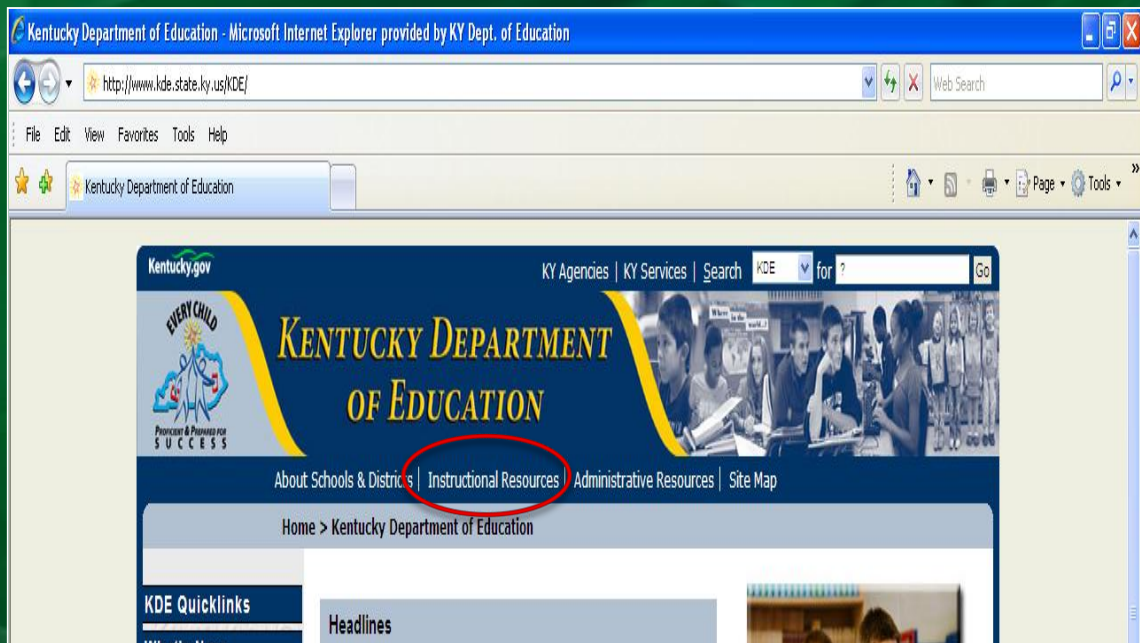
- Other relevant data used for decision-making.

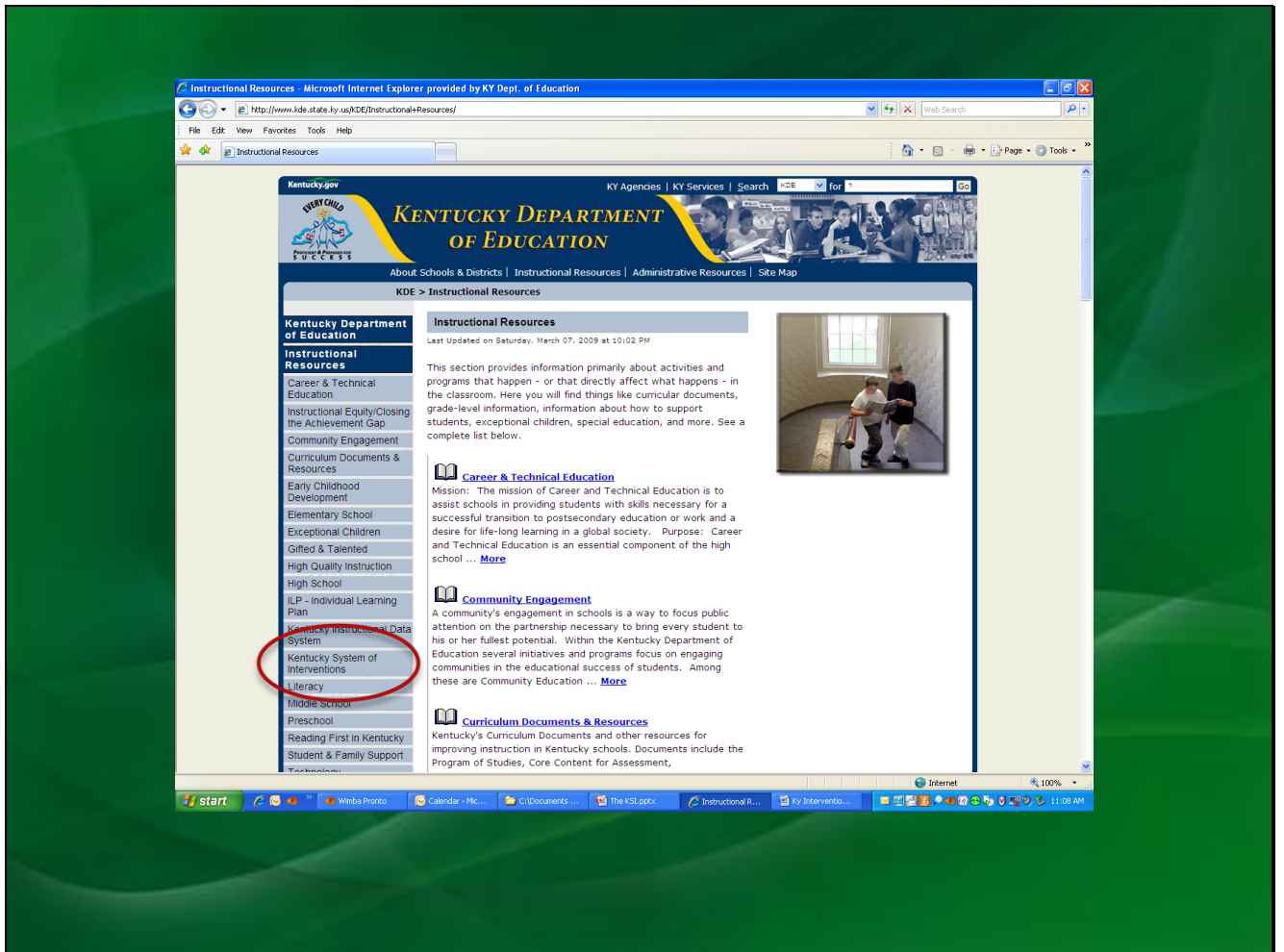
- Interventions chosen to target the specific skill deficits.

- Continuous data collection used so instruction can be adjusted based on the student's response to the instruction.

The KSI Guide Location

KDE Homepage > Instructional Resources > Kentucky System of Interventions
<http://www.kde.state.ky.us/KDE/Instructional+Resources/Kentucky+System+of+Interventions/>





The screenshot shows a Microsoft Internet Explorer browser window displaying the Kentucky Department of Education website. The browser's address bar shows the URL: <http://www.kde.state.ky.us/KDE/Instructional+Resources/Kentucky+System+of+Interventions/>. The website header features the Kentucky Department of Education logo with the slogan "EVERY CHILD SUCCEEDS" and the text "KENTUCKY DEPARTMENT OF EDUCATION". Navigation links include "About Schools & Districts", "Instructional Resources", "Administrative Resources", and "Site Map". The main content area is titled "Kentucky System of Interventions" and includes a "A GUIDE TO THE KENTUCKY SYSTEM OF INTERVENTIONS" section. This section provides an overview of the KSI framework and lists various resources such as "Core Instruction - Tier 1", "Supplemental Instruction - Tier 2", and "Intensive Instruction - Tier 3". A "Table of Contents" is also provided, listing 12 items including "Overview", "Core Instruction - Tier 1", "Supplemental Instruction - Tier 2", "Intensive Instruction - Tier 3", "Glossary of Commonly Used RTI Terms", "References", and six appendices (A-F). The browser's taskbar at the bottom shows several open applications, including "Winba Pronto", "Inbox - Micro...", "The KSI.pptx", "The Kentucky S...", "Kentucky Syse...", and "Document1 - M...". The system clock indicates the time is 12:01 PM.

The KSI FAQ

KDE > Instructional Resources > Kentucky System of Interventions

The screenshot shows a web browser window displaying the Kentucky Department of Education's website. The page title is "Kentucky System of Interventions - Microsoft Internet Explorer provided by KY Dept. of Education". The URL is "http://www.kde.state.ky.us/KDE/InstructionalResources/Kentucky+System+of+Interventions/". The page features the KDE logo and navigation links for "About Schools & Districts", "Instructional Resources", "Administrative Resources", and "Site Map". The main content area is titled "Kentucky System of Interventions" and includes a "Table of Contents" with 12 items: 1. Overview, 2. Core Instruction - Tier 1, 3. Supplemental Instruction - Tier 2, 4. Intensive Instruction - Tier 3, 5. Glossary of Commonly Used RTI Terms, 6. References, 7. Appendix A - History, 8. Appendix B - Student Intervention System Readiness Tool, 9. Appendix C - Legislation That Created RTI, 10. Appendix D - KSI Crosswalk, 11. Appendix E - EPAS Interventions and Documentation, and 12. Appendix F - Kansas Multi-Tiered System of Support. A sidebar on the left lists "Instructional Resources" and "Kentucky System of Interventions" with sub-links for Overview, Core Instruction-Tier 1, Supplemental Instruction-Tier 2, Intensive Intervention-Tier 3, Glossary of Commonly Used RTI Terms, References, and Appendices.